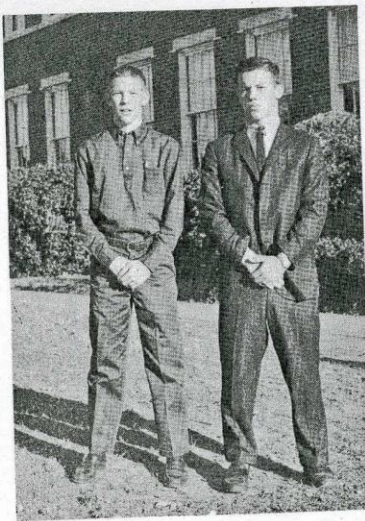


#63A 1962-63 Beaufort Basketball Team

KNEELING, FRONT: Chuck Lewis, Ray Hassel **STANDING L to R:** Clem Woodard, Cary John Kirk, Sandy Boswell, Brady Way, Alton Hill, Chris Pake, Richard Stanley, Jeffrey Salter and Johnny Hassell

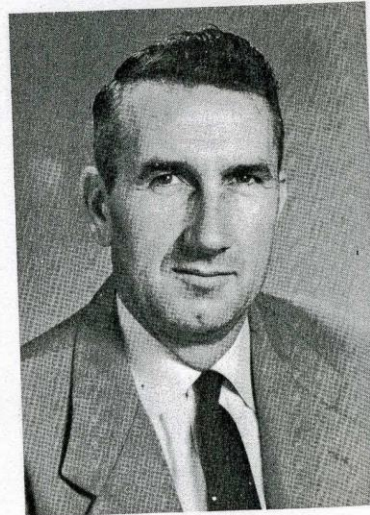


KNEELING, FRONT: Chuck Lewis, Ray Hassel. STANDING, LEFT TO RIGHT: Clem Woodard, Cary John Kirk, Sandy Boswell, Brady Way, Alton Hill, Parris Croom, Chris Pake, Richard Stanley, Jeffrey Salter, Johnny Hassell.



MANAGERS
Bill Harris
Charles Dickinson, Assistant

This year, Beaufort High School has excelled itself in developing a top basketball team. And this is a team, not five individuals trying to prove their skills, but one unit working together in the tradition of Beaufort sportsmanship. This group, under pressure, exhibits the best in basketball performance with as many as three players scoring in the double digits. All of this has been achieved through the coaching of Coach Tom McQuaid. However, with his record of wins, the state's best basketball coach still states, "The boys are the ones who do it."



COACH
Mr. T. H. McQuaid