

Coaches Name All-County Hoop Team

Llewellyn Phillips, Morehead City, and Butch Hassell, Beaufort, were unanimous choices on the first NEWS-TIMES sponsored All-County basketball team. All coaches in the county took part in voting for the honor team. Other team members are Johnny Mason of Newport, Glenn Willis of Smyrna and Raymond Gillikin of Beaufort.

Second team selections were Darden Eure of Morehead City, Darryl Willis of Beaufort, Larry Wallace of Newport, Steve Mason and Roger Harris of Atlantic.

Top Point-Makers

All players on the first team averaged more than 16 points a game during the regular season. Phillips was high scorer with an average of 27.9 points per game. Team average, 46.91.2 points a game.

The All-County team is a combination of speed, good size and top shooting ability. Phillips, the center, is the tallest man on the team at six-three. Willis and Mason, the forwards, stand better than six-one and with Phillips could control both backboards against any team in this section.

The guards, Hassell and Gillikin, are a couple of fast, deceptive players who can hit from outside or drive through the defense for a lay-up.

Eure was the top vote getter on the second team. He got two votes for first team and three for second team honors. The scrappy forward was regarded by opposing coaches as one of the best rebounders in the county.

Scoring Punch

Harris and Mason, representing the Atlantic Pirates, add a big scoring punch to the second team. Wallace, a Newport stalwart, is regarded as a good defensive player as well as a top scoring threat. Willis rounds out the second team with plenty of speed and a good shooting eye.

The second team is averaging 34.8 points per game. This combination would probably be the only team in this section that would have a chance of beating the first team.

Each member of the All-County five will receive a certificate and medal from THE NEWS-TIMES. Members of the second team will get certificates.

Players getting honorable mention will also get certificates. They are Reuben Lilly, Larry Kirk and Alton Hardison, Newport; Lynwood Durham, Walter Morris and Jimmy Swann, Morehead City; Pud Hassell, Alex Copeland and Allen Aubrey, Beaufort; Paul Wade, Horace Lawrence, Braxton Piner and Curtis Nelson, Smyrna; and Bobby Nelson, George Golden and Sammy Saiter, Atlantic.

The All-County girls team will be announced next week.



Llewellyn Phillips
... scoring ace



Butch Hassell
... Seadog leader



Glenn Willis
... Smyrna star

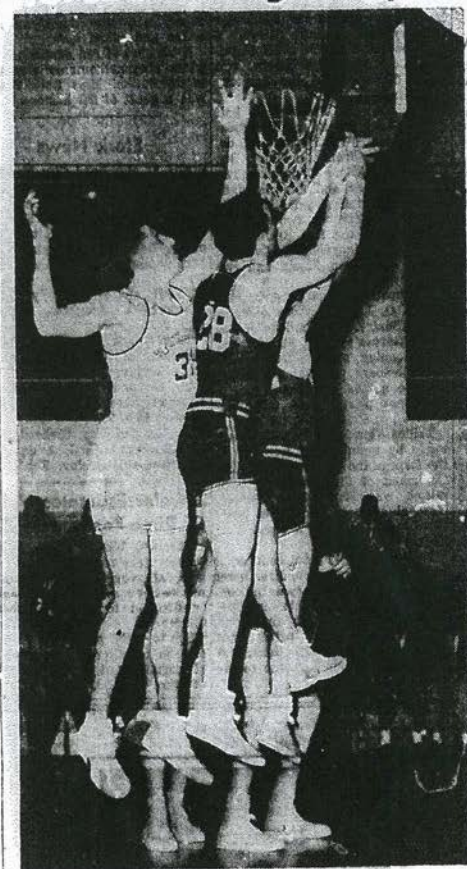


Raymond Gillikin
... Beaufort playmaker



Johnny Mason
... sharpshooter

Smithfield Red Devils Destroy Morehead Eagles by 74-47 Score



Lynwood Durham, 28, and another Morehead City player keep Smithfield's big man, Douglas Hobgood, away from a rebound during Wednesday night's tournament game at Jones Central gym.

The Smithfield Red Devils ran up a 23-point lead over the Morehead City Eagles in the first half of their game in the Coastal Plain tournament at Jones Central Wednesday night. They toyed with the Eagles during the second half, finally winning by 27 points, 74-47.

The Eagles managed to score only nine points while the Red Devils were racking up 21 in the first quarter. By the end of the first half the Red Devils held a 11-16 advantage.

The only Morehead City player in the ball game during the first half was Darden Eure. The hard-fighting forward put up a brilliant one-man defense but he had four fouls called on him before the second quarter was over. He fouled out midway in the third period. Eure scored 12 points before leaving the game.

Jimmy Swann and Lynwood Durham tried to get a rally started in the second half but the Eagles never were able to get rolling.

Hits 19 Per Cent

After Llewellyn Phillips took nine shots from the floor and missed all nine in the first quarter, the Red Devils didn't even try to keep him from shooting from outside. He took 36 shots at the basket and hit on seven for 19 per cent accuracy. He connected on two of five free throw attempts to run his point total to 16 points.

The Red Devils controlled both backboards despite some hard playing under the basket by Eure and Durham. Douglas Hobgood and Jerry Highsmith were the big men in the Smithfield attack.

High Scorers

The two tall men grabbed more than their share of rebounds and hit consistently against the Eagle defense. Highsmith scored 22 points and Hobgood hit for 21.

Coach Gannon Talbert cleared the Eagle bench late in the game to give all his players a chance to get into the game. The only ones to hit the scoring column follow: Phillips, 16, Eure, 12, Durham, 5, John Phillips, 5, Jimmy Swann, 5, and Walter Morris, 4.

Wallace-Rose Hill beat Hobbs in the first game of the tournament. The Bulldogs met Jones Central last night and the Red Devils met Pamlico Central. The winners of last night's games will play tonight for the championship.

Beaufort Seadogs Burgaw in District

Football Dance Yields Net Profit of \$165.50

Dan e chairman Nick Galantis reports that the Morehead City Boosters Club football dance at the Morehead Baltimore Hotel last Friday night netted a profit of \$165.50.

All profits from the dance will go to the Morehead football team to buy new uniforms and equipment. Mr. Galantis says that the generosity of the hotel and Dean Chalos and his orchestra were responsible for the good returns.

The Beaufort Seadogs will meet Burgaw in the opening round of the district tournament at Kinstonville tomorrow night. The Seadogs will be the host of a doubleheader and is scheduled to meet at 7 p.m.

Beaufort Coach F. J. McFarland says that he received information about the game. "We haven't received the complete particulars of the game and don't know who we will meet in the second round if we should win," Coach McFarland said.

Injuries and illness have left their mark on the Seadogs, but the coach says that most of his players will be in top condition for the game.

Butch Hassell is the top district mark right now. He scored 20 points in the final game of the county tournament Saturday night in trying to get up his point total.